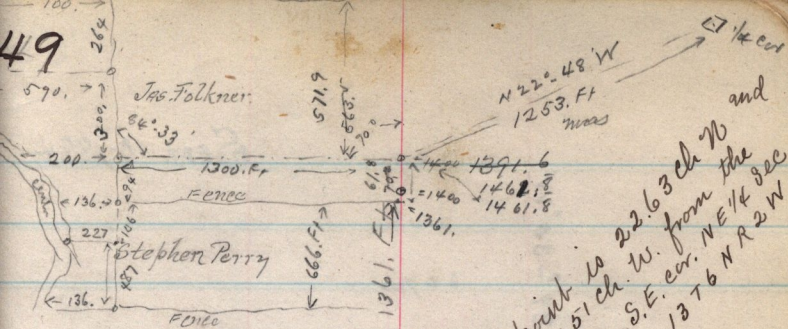


49



9.51 ch. W. from the
S.E. cor. NE 1/4 Sec
1376 NR 2 W

22.63 ch W

for notes of Road
leading S. see page 79

4 Rod St- S 0° 45' W

N 80

SANDSTONE

This point is
Reference stakes are
set 1 at 30. ft NE
& 1 at 30. ft NW
Cedar Post. 3/4
from

ST- RUNNING N. 0° 45' E
SE E Page 67

S 58° 43' E
OBS. PK.

N 18° 45' E
BENLOWARD

N 72° 40' E
D.G. PK.

N 0 80

135.5 Ft

Plain City Canal

D. F. Thomas

1111

72 v
43
48.5 0
47.6 5 0

32
49
49
v 2.12